

CISE-ESA Connection

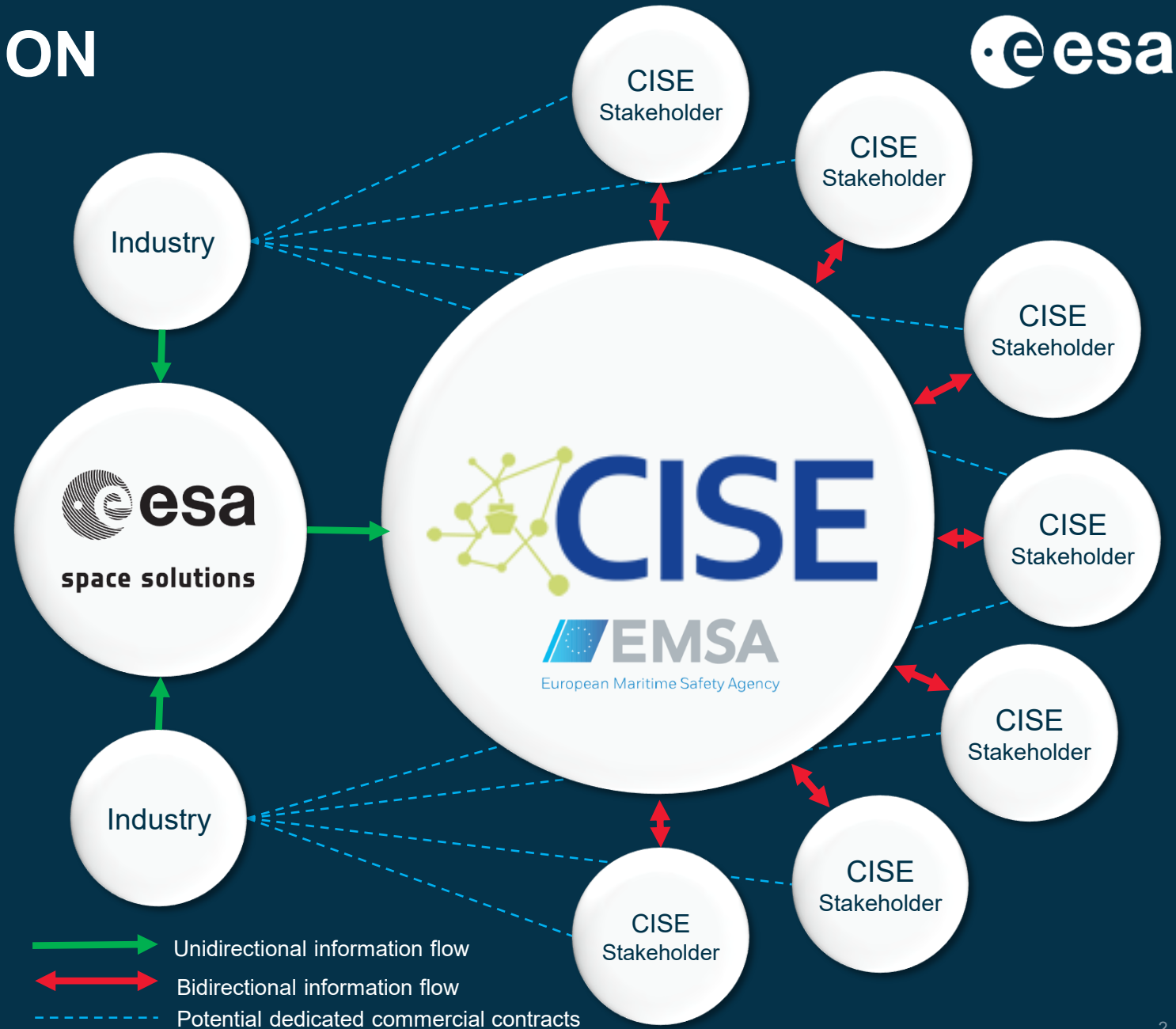
Satellite-based Services: GNSS RFI Detection & Localisation

4th CISE Open Day

VTC/ 11 December 2025

ESA's CISE PARTICIPATION

- ESA aims to establishing a **CISE node** to allow BASS industry to pilot new services with CISE stakeholders
- ESA node will be **unidirectional**, injecting novel services for a **limited period** for trial and evaluation
- Pilots with CISE stakeholders intend to facilitate the **adoption of space enabled solutions** by authorities, and underpin the **adoption** of novel, space-based services.
- Possible follow-on **commercial agreements** are to be discussed (if applicable) between CISE members and service providers.



1 GERMAN AEROSPACE CENTRE - DLR

RESIST satellite-based GNSS interference monitoring to detect jamming and spoofing, providing a clearer view of affected areas in a dynamic interference risk map
(Already tested with Lufthansa, KLM, Norwegian Airlines and at the Port of Marin)

JASP-R on-demand high-precision geolocation, enabling accurate localisation of interference sources when requested

Planned JASP-R services

GOVmapping

(Simulated Data)



 : spoofing  : jamming

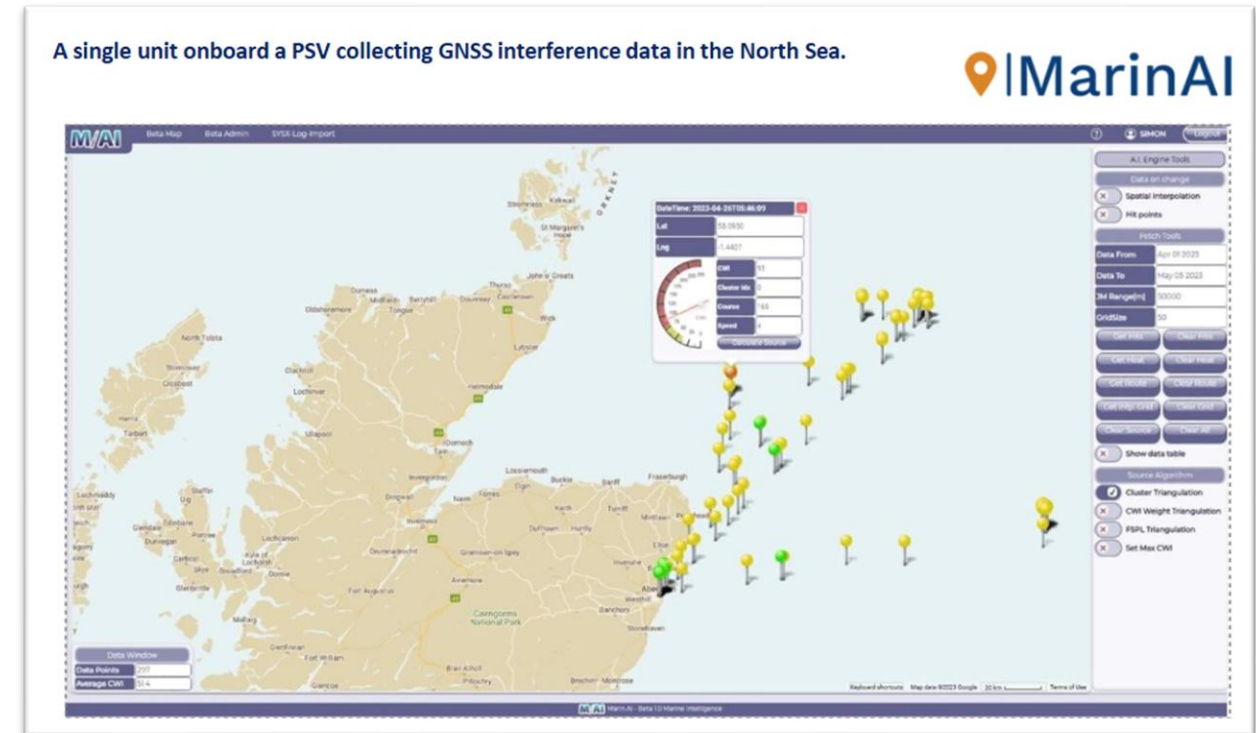
- Detailed display of jamming and spoofing estimated position
- Accurate zoom
- 1 year access to historical data
- **E2E encryption**

2 MarinAI

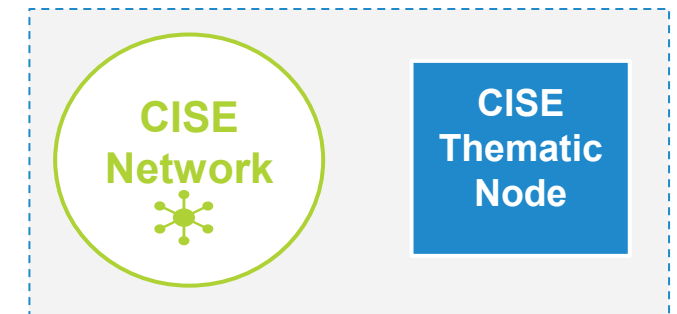
Relies on distributed architecture with network of sensors spread across vessels and coastal stations:

- alert on-board for ship crews when subject to jamming and spoofing
- aggregated data displayed on a map with near real time and historical incident displays for authorities

- **6-month pilot completed** successfully in the North Sea
- **Deployment underway in the Baltic**, with regional roll-out ongoing
- **Baltic & North Sea domain awareness** available within **3-6 months**
- **Enhanced data analytics** for in-depth incident assessment

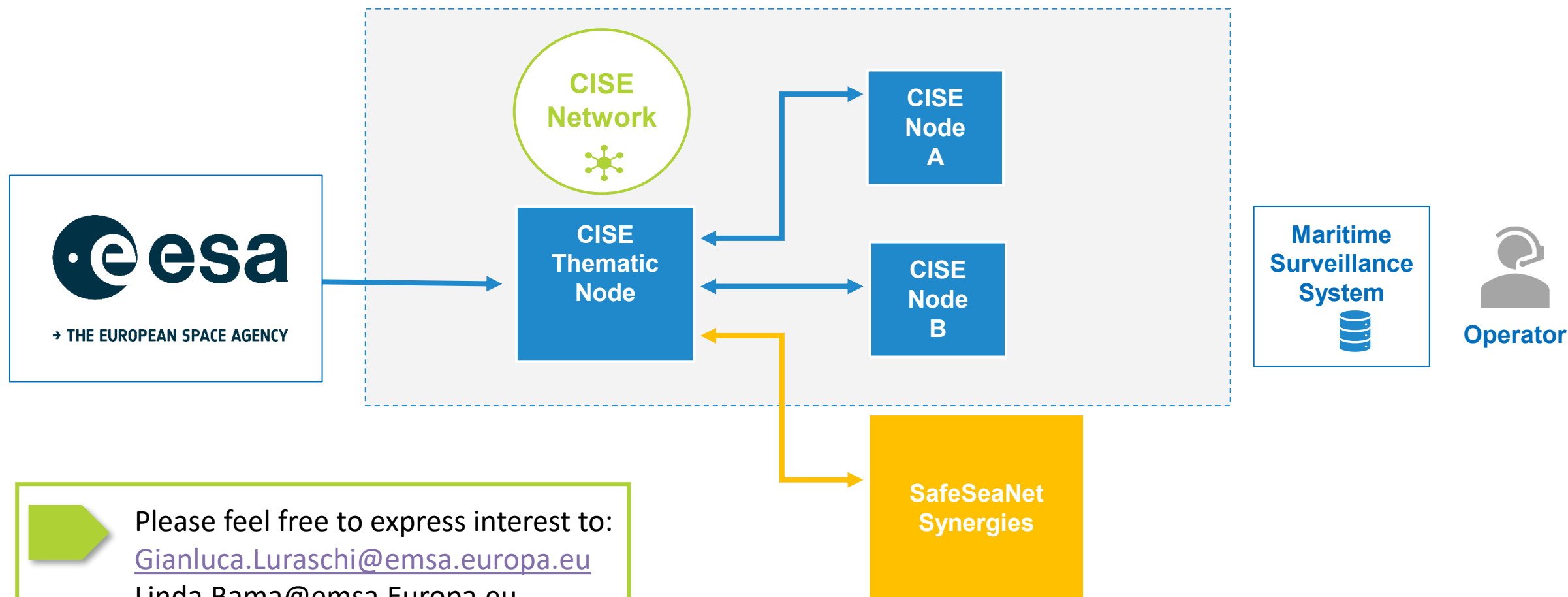


- ❑ Establishment of a **CISE-ESA thematic node** approved at the **17th CISE Stakeholder Group Meeting** (18-19 June 2025)
- ❑ **Initial pilot services** presented by ESA at the **18th CISE Stakeholder Group Meeting** (4-5 November) followed by an **open call for expression of interest**
- ❑ Follow-up to take place at **Operational Working Group** level
- ❑ **Early 2026**: CISE and ESA to take forward **technical implementation via the CISE node & adaptor**



CISE thematic node for satellite-based maritime services

Information flow: **uni-directional**





Thank you!

Follow our activities on social media:



emsa.europa.eu/newsroom/connect

